



Gallery of Student Art  
105 University Centre, University of Manitoba  
Monday-Friday, 9am-4pm  
gosa@umsu.ca

### Submission Requirements

All submissions must be sent via email to gosa@umsu.ca

Submissions must include the following:

- Name and contact information
- Exhibition description which clearly outlines the intended use of the space
- Artist/group statement (about the exhibition)
- A brief bio
- Images
- Image list, which includes the title, medium, dimensions, and date of work
- Any unusual requirements for installation
- (Working) title

### Submission Deadlines

Proposals will be accepted throughout the year and reviewed after each deadline.

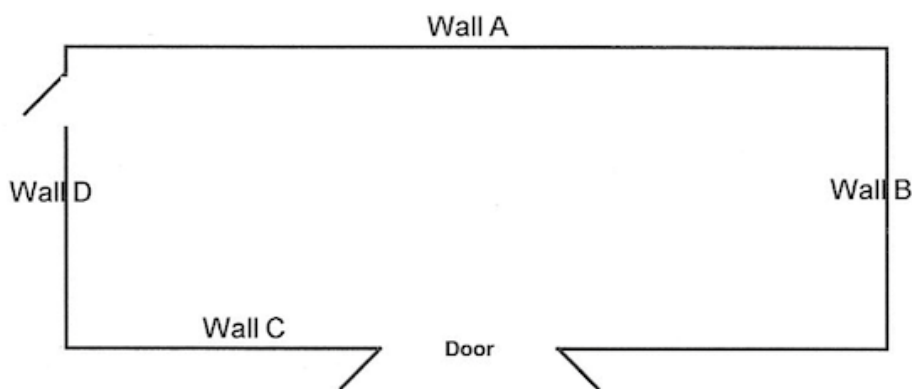
**Incomplete submissions will not be considered.**

### Exhibition Guidelines

Exhibitions are generally scheduled for 1-2 weeks. All works are to be dropped off and picked up by the artist or organizer(s). GoSA will advertise each exhibition across social media and provide funds for catering for each formal opening. **All artists or organizer(s) must have approval from the Gallery prior to distributing any promotional material.** Students will not be eligible for artist fees.

A contract agreement between GoSA and the artist or organizer(s) must be signed prior to the exhibition. The gallery coordinator will assist with the installation and dismantling of each exhibition. Artists or organizer(s) are required to assist with the installation and preparation of the gallery space. GoSA nor UMSU is responsible for keeping work after the completion of exhibitions.

## The GoSA Space



- A. 30' Wall (Drywall)
- B. 15' Wall (Glass)
- C. 30' Wall (Glass)
- D. 15' Wall (Drywall with 32" door)